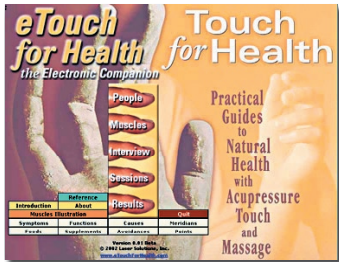


eTouch for Health

Natural Health Techniques

eTouch ver. 2.2!



How-to Interactive Software now being used in Homes and Clinics in over 55 Countries

Now even Better with new Features and Images!

Enhancements:

- Color illustrations and photos from *Touch for Health: The Complete Edition*.
- Reference is 3X larger with more topics and content including all IKC techniques
- New **Omni Screen** puts all relevant images, illustrations, digital movies and five-element metaphors on one screen for quick sessions and demonstrations. For advanced users.
- New set of personal reports available
- Now with Emotional Freedom Technique (EFT)

Simplifications:

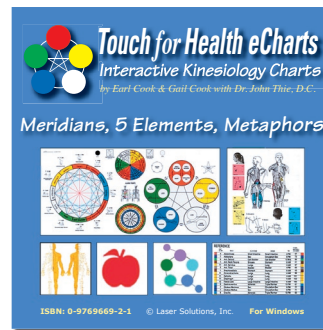
- Three New Tutorials for learning *Touch for Health & eTouch!*
- Key TFH Charts now easily accessible from new Charts Menu
- Muscle 'Playful Names' now included to assist new students of *Touch for Health*

Refinements:

- Muscle Tabs for easy navigation in the Muscle Reference
- New Cross-references tie relevant information together even more tightly with related charts and content
- Large Print option available in Reference for easier reading

Plus much more...

www.etchforhealth.com



Touch for Health eCharts

Interactive TFH Charts

TFH eCharts and eTouch for Health by Earl & Gail Cook with Dr. John Thie, D.C. and Matthew Thie, M. Ed.

Keep the TFH wall charts on your computer for easy reference. Quickly flip from one chart to another with these interactive charts. Print the charts for reference or class handouts. Very easy to use. Includes digital versions of all the popular **Touch for Health** wall charts:

- *Touch for Health Reference Chart*
- *Touch for Health Midday-Midnight Law & 5 Elements Chart*
- *Touch for Health Assessment/Metaphors Chart*
- *Touch for Health Meridian Acupuncture Reference Chart*

Great for training. These charts can be projected or shown on a large screen. Easily take all the charts with you on your laptop when traveling.

Order Form

_____		Country	
Name (If using Credit Card, same as on card)		_____	
_____		Phone	
Address _____	City _____	State/Province _____	Zip/Postal Code _____
_____ MasterCard	_____ Visa	_____	
_____		Email	
Credit Card Number _____	_____		Exp. Date _____
Qty. _____	_____ @ \$89.95 eTouch Version 2.0		
_____	_____ @ \$59.95 eTouch Version 1.0		
_____	_____ @ \$49.95 TFH eCharts		
Subtotal _____	_____		
GA residents 7% sales tax _____	_____		
Shipping & Handling _____	\$6.50 (8.50 Int'l)		
Total _____	_____		

Please Indicate:
 Windows
 Mac OS X

Laser Solutions, Inc.
 9401 Roberts Drive, 7-F
 Atlanta, GA 30350
 Ph: 770-992-3914
 Fax: 770-518-1204